

ZTE Mobile Internet Product



ZTE 4G Wireless Router MF283U Product Description

2020-11-05

1 Product Overview



MF283U is a 4G Wireless Router that can provide both LTE CAT4 high speed data service to home users or business users. With a sleek upright design, the MF283U supports data downlink speeds of 150 Megabits per second, and 50Mbps for uplink, delivering high-speed mobile internet access for up to 32 users simultaneously. With the runway design, MF283U is a stylish addition to your desks.

Meeting the needs of customers all over the world, MF283U support a broad range of LTE spectrum used in different markets globally. Support for external antenna will allow the MF283U to be deployed in areas of poor mobile signals.

2 Features

- FDD/TDD/UMTS/GSM multi-mode
- LTE CAT4, DL/UL 150/50Mbps
- Global band configuration
- Wi-Fi 802.11 b/g/n, up to 300Mbps
- 32 Wi-Fi users
- WPA/WPA2 and WPS
- Firewall
- IPV4/IPV6
- VPN pass through
- Optional external antennas
- Fota
- All mainstream browser
- WebUI & APP

3 Technical Specifications

3.1 Hardware Specification

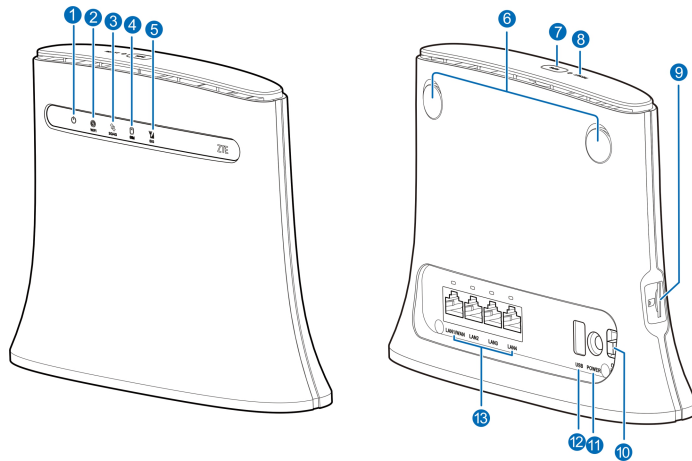
Item	Description	
Technical standard	WAN	FDD-LTE/TDD-LTE/HSPA+/HSPA/UMTS/EDGE/GPRS/GSM
	LAN	IEEE 802.3/802.3u
	WLAN	IEEE 802.11 b/g/n
Working frequency band	LTE	FDD-LTE Band 1,3,8 TDD-LTE Band 40
	HSPA+/HSPA/UMTS	Band 1
	EDGE/GPRS/GSM	Band3,8
	WLAN	2.4GHz
Antenna	Antenna type	Built-in LTE/UMTS/GSM antenna Built-in WLAN 2.4GHz antenna
	LTE antenna gain	698-960MHz: 0.5dBi 1710-2700MHz: 2.5dBi
External port	4 x RJ45 (FE, 1 x WAN/LAN, 3 x LAN) 1 x SIM Slot (2FF); 2 x SMA (External Antenna) 1 x DC470 (12V DC Power supply) 1 x USB-A(Factory Test)	
Indicator	1 x Power (Blue) 1 x Wi-Fi(Blue) 1 x SIM (Blue) 1 x Network(3 color) 1 x Signal (Blue)	
Button	1 x Power Switch 1 x Reset button 1 x WPS button	
Maximum Tx power	LTE	23+/-2.7 dBm
	Wi-Fi	20dBm 11b 16dBm 11g 15dBm 11n
Power Supply	Rated voltage: 12V DC±10% Rated current: 1.5A Input voltage: 100V~240V, 50Hz~60Hz	
Dimension	195 x 150 x 55mm	
Weight	About 400 gram	

Environment	Operating temperature: -20 to 60° C Storage temperature: -40 to 70° C Humidity: 5%~ 95%
-------------	---

3.2 Software Specifications

Item	Description	
Cellular Data Service	FDD-LTE	LTE CAT4 DL/UL 150/50Mbps
	TDD-LTE	LTE CAT4 DL/UL 110/10Mbps
	UMTS	HSDPA CAT 14 HSUPS CAT 6 DL/UL 21.6/5.76Mbps
	EDGE	Multi-slot Class 12 UL/DL 236.8kbps
	GPRS	Multi-slot Class 10 UL 80kbps /DL 40kbps
Wi-Fi	MIMO	2.4GHz 2x2
	Data Rate	2.4GHz 300Mbps
	Max. Client	32 users
	WPS	PBC(Push Button Config) & Station PIN
	Security	WPA-PSK/WPA2-PSK
Management	WebUI App for Android and iOS TR-069	
Browser	IE (7.0 and later) Firefox (3.0 and later) Safari (4.0 and later) Opera (10.0 and later) Chrome (10.0 and later)	
Router Function	Port forwarding IP filter DMZ UPnP VPN passthrough	
Other Function	SMS (Via WebUI) Phonebook (Via WebUI) IPV4/IPV6 On line Upgrade (Fota)	

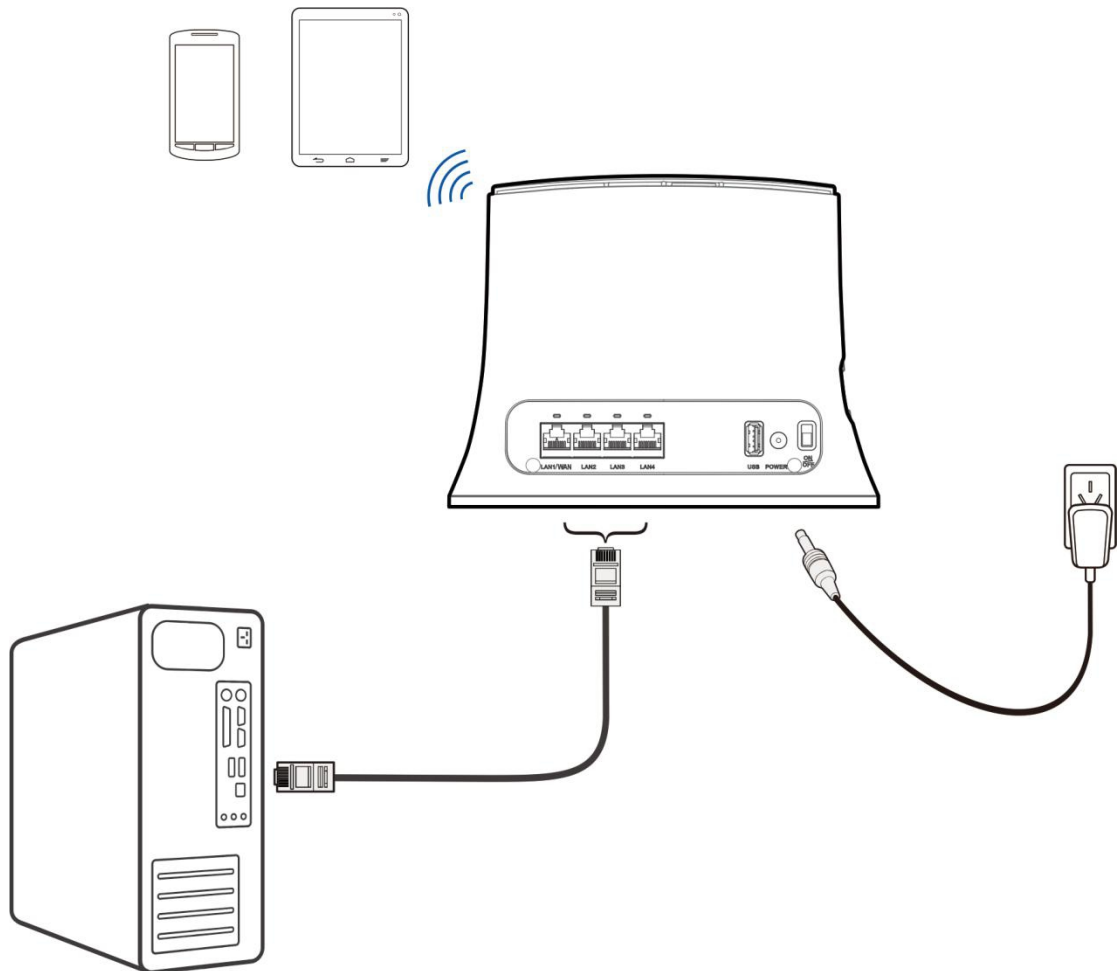
4 Interface Description



1	POWER Indicator
2	WIFI Indicator
3	3G/4G Indicator
4	SIM Indicator
5	SIG Indicator
6	External antenna ports
7	WPS key
8	RESET key
9	(U)SIM card slot
10	ON/OFF Switch
11	POWER port
12	USB port
13	LAN ports

5 Application Scenario

MF283U accesses the LTE network and provides the data service for the users via Wi-Fi and LAN



6 Packing List

The follow table shows the devices and accessories

Table Packing list

Item	Quantity
Wireless Router	1
AC adapter	1
Quick guide	1
Warranty card	1